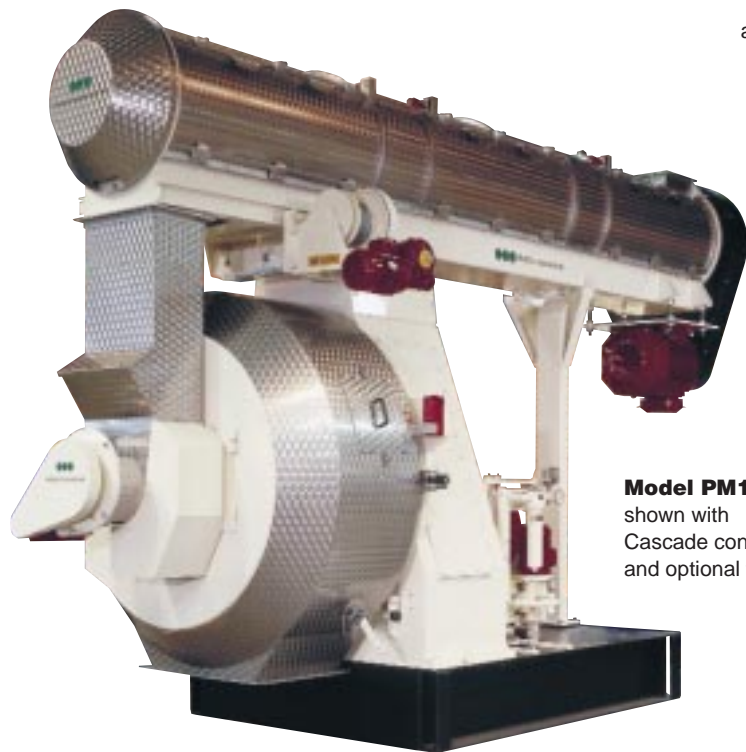


Sprout-Matador Pellet Mills

PM717, PM919 and PM1219



Sprout-Matador PM 717, PM919 and PM1219 Pellet Mills



Model PM1219
shown with
Cascade conditioner
and optional transfer screw

Model PM919
without conditioner,
arranged for gravity feed



Model PM717XW shown with
over-under conditioner and Centrifeeder

Efficient – Versatile – Cost-effective

A fine-tuned design that offers highly efficient pelleting

Model	Die Size	Working Area (Sq. In.)	Max. HP
PM717	717W	648	500
	717XW	852	500
PM917	917W	842	500
	917XW	1108	500
PM919	919XW	1108	800
	919TW	1329	800
PM1219	1219W	1802	800
	1219XW	2002	800

PM717, PM919, PM1219:
New pellet mills in production ranges our customers are seeking, with proven features from our long-established family of gear driven pellet mills.

More die area, more square inches, per HP, for optimum production efficiency

These machines, specifically engineered for the animal and formula feed industries, maximize your efficiency by maximizing the die-to-horsepower relationship. The series offers a range of die size and horsepower combinations that allows selection for a wide array of applications/capacities.

We'll work with you to assure precise sizing for your formula and desired output.

Outstanding Operating Features

Internal splash lubrication system

...Eliminates external oil circulation or cooling system for the gearcase.



This design means no oil pump, heat exchanger, or external piping for lubrication, eliminating those maintenance costs.

On high horsepower machines, an external cooling and lubrication system is available as an option, to be considered especially for operation in warm climates.



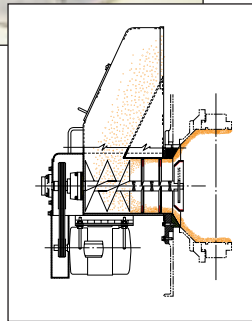
Single reduction, helical gearing

...Delivers smooth, quiet operation and long service life.

Effective feed distribution



Sprout-Matador's proven Centrifeder provides uniform feed distribution to the pellet mill, for long-term operating and maintenance advantages. As feedstock enters the die cavity from the Centrifeder,



three adjustable feed plows divide and distribute feed uniformly across the die face ahead of each roll. Smooth operation, even die wear, and consistent power demand are the benefits to you. This design also helps compensate for varying bulk densities of different materials, and is especially useful for products with difficult handling characteristics.



Gravity feed systems with guide flights are another choice, especially for high grain feed formulas.

Gravity feed systems with guide flights are another choice, especially for high grain feed formulas.

Optional built in hoist with lifting tools

...makes die changes and roll assembly replacement easier and safer. The rack and pinion system



can be used for maintenance at the rear of the machine, as well.

Shear pin hub array

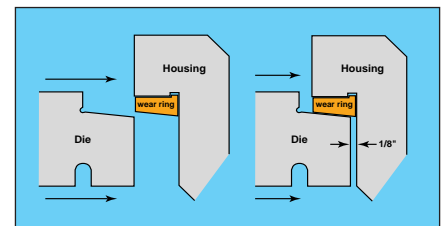
...with proximity switch protects the shaft against damage from seizing up due to tramp metal. The design



enables convenient main shaft removal and remote lubrication of the roll and main bearings.

Tapered die fit

...for easier die changing. Self-piloting effect makes changing dies smooth and easy. Once die

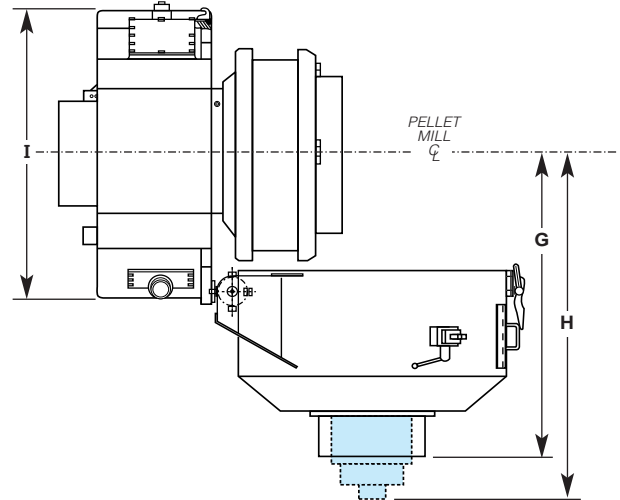
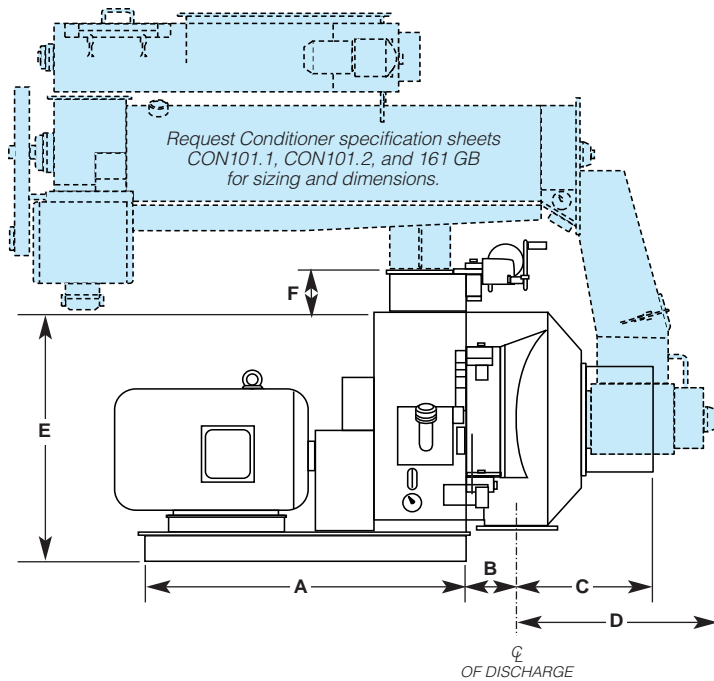


is aligned with the housing, only the final 1/8" (3.175mm) requires turning of the die bolts to complete the press fit. Snap-in wear ring needs no welding.



Pellet Mill Control Systems

Available from Sprout-Matador, through Andritz Automation: stand alone pellet mill controllers that use standard PLC controllers of your choice. These pellet mill controls incorporate proven anti-plug routines that enable the pellet mill to sense and recover from plug conditions without dumping feed.



C and G dimensions are to be used with gravity feed configuration.

D and H dimensions are used with optional Centri-feeder®

Dimensions are approximate. Installation drawings supplied per order.

Dimensions in Inches										Approx. Net Wt. (lbs.)
Model	A	B	C	D	E	F	G	H	I	
PM717W & XW	70.9	12.2	59.1	63.6	66.3	6.1	60.4	65.0	56.1	18,500
PM917W & XW	70.9	12.2	59.1	63.6	66.3	6.1	60.4	65.0	56.1	19,500
PM919XW	95.1	13.4	50.4	54.9	77.8	6.1	85.6	90.2	70.9	20,000
PM919TW	95.1	13.4	N/A	54.9	77.8	6.1	N/A	90.2	70.9	21,000
PM1219W & XW	95.1	14.2	N/A	53.7	77.8	6.1	N/A	96.5	70.9	29,000



SPROUT-MATADOR

A DIVISION OF ANDRITZ INC.

www.sprout-matador.com

10745 Westside Parkway
 Alpharetta, Georgia 30004 USA
 Tel.: +1 770 667 5100
 Fax: +1 770 667 5222

35 Sherman Street
 Muncy, PA 17756-1202 USA
 Tel.: +1 570 546 5811
 Fax: +1 570 546 1306

SPROUT-MATADOR A/S
 Member of the Andritz Group
 P.O. Box 2050
 Glentevej 5 -7 KD-6705
 Esbjerg Ø Denmark
 Tel.: +45 72 160 304
 Fax: +45 72 160 301

Notice: Photographs, illustrations, drawings and descriptions contained in this publication are not intended to depict actual operating conditions or to suggest operating procedures. They are included only as a means of highlighting the features of the machinery. Andritz, Inc. operating instructions and recommended safety procedures should be followed during equipment installation and operation. Specifications are subject to change without notice.

MEMBER OF THE **ANDRITZ** GROUP